



Pye Antiques Restoration
Restoration & Conservation of Fine Period Furniture

SUPPORTING FIGURES FOR INVOICE



Fig,1 Front Blocks (pair).

Robert Pye FIOC (Institute of Carpenters) BADA (West Dean) Diploma

Beech Tree Workshops, Tuxwell Farm, Spaxton, Bridgwater, Somerset TA5 1DF

Tel: 01278 671960 e-mail: robert@pyeantiquesrestoration.co.uk www.pyeantiquesrestoration.co.uk





Fig 2, Corner block (back) you can see the woodworm is the back leg.

Robert Pye FIOC (Institute of Carpenters) BADA (West Dean) Diploma

Beech Tree Workshops, Tuxwell Farm, Spaxton, Bridgwater, Somerset TA5 1DF

Tel: 01278 671960 e-mail: robert@pyeantiquesrestoration.co.uk www.pyeantiquesrestoration.co.uk





Fig 3, the remains of one of the, burried screws. More signs of worm.

Fig 4, Stage1 online video:

https://pyeantiquesrestoration.co.uk/wp-content/uploads/2025/09/20240915_1829521.mp4

Robert Pye FIOC (Institute of Carpenters) BADA (West Dean) Diploma

Beech Tree Workshops, Tuxwell Farm, Spaxton, Bridgwater, Somerset TA5 1DF

Tel: 01278 671960 e-mail: robert@pyeantiquesrestoration.co.uk www.pyeantiquesrestoration.co.uk





Fig 5, Scraping off the surface, the hardened consolidator off

Robert Pye FIOC (Institute of Carpenters) BADA (West Dean) Diploma

Beech Tree Workshops, Tuxwell Farm, Spaxton, Bridgwater, Somerset TA5 1DF

Tel: 01278 671960 e-mail: robert@pyeantiquesrestoration.co.uk www.pyeantiquesrestoration.co.uk





Fig 6, One of the seat rails with split down the line of cane holes due to the wood worm.



Fig 7, Jig A for routing (gutting the seat rails & the leading edges later).



Fig 8, the remaining 'L' section of the seat frame.

Robert Pye FIOC (Institute of Carpenters) BADA (West Dean) Diploma

Beech Tree Workshops, Tuxwell Farm, Spaxton, Bridgwater, Somerset TA5 1DF

Tel: 01278 671960 e-mail: robert@pyeantiquesrestoration.co.uk www.pyeantiquesrestoration.co.uk





Fig 9, One of the seat rails with the replacement beech



Fig 10, The offset holes on the seat frame.

Robert Pye FIOC (Institute of Carpenters) BADA (West Dean) Diploma

Beech Tree Workshops, Tuxwell Farm, Spaxton, Bridgwater, Somerset TA5 1DF

Tel: 01278 671960 e-mail: robert@pyeantiquesrestoration.co.uk www.pyeantiquesrestoration.co.uk





Fig 11, showing the 20degree difference.

Robert Pye FIOC (Institute of Carpenters) BADA (West Dean) Diploma

Beech Tree Workshops, Tuxwell Farm, Spaxton, Bridgwater, Somerset TA5 1DF

Tel: 01278 671960 e-mail: robert@pyeantiquesrestoration.co.uk www.pyeantiquesrestoration.co.uk





Fig 12, The Jig B & C for the drilling of the holes in the seat rails, & bask rails, Note the different angle with interchangeable angled boards.

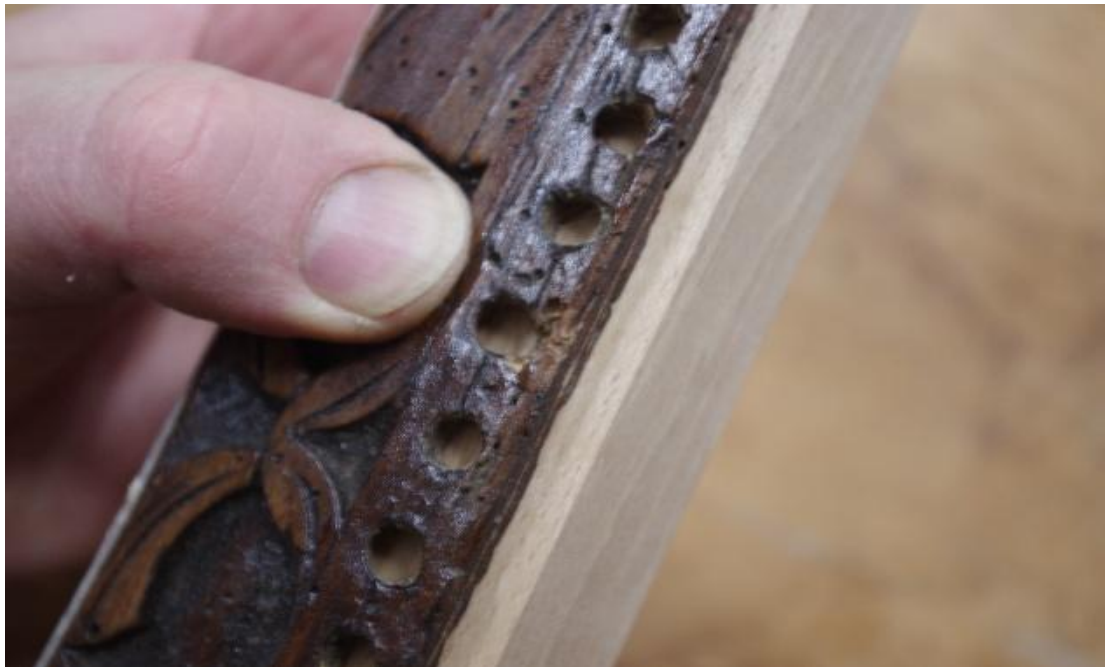


Fig 13 the leading edge of one of the seat rails. note the worm breaking through.

Robert Pye FIOC (Institute of Carpenters) BADA (West Dean) Diploma

Beech Tree Workshops, Tuxwell Farm, Spaxton, Bridgwater, Somerset TA5 1DF

Tel: 01278 671960 e-mail: robert@pyeantiquesrestoration.co.uk www.pyeantiquesrestoration.co.uk





Fig 14, the routeing of the old edge. In Jig a (fig 6).

Robert Pye FIOC (Institute of Carpenters) BADA (West Dean) Diploma

Beech Tree Workshops, Tuxwell Farm, Spaxton, Bridgwater, Somerset TA5 1DF

Tel: 01278 671960 e-mail: robert@pyeantiquesrestoration.co.uk www.pyeantiquesrestoration.co.uk





Fig 15 & 16, The plugged and drilled holes on the back carved , cresting rail and the bottom rail and the 2 sides of the back.

Robert Pye FIOC (Institute of Carpenters) BADA (West Dean) Diploma

Beech Tree Workshops, Tuxwell Farm, Spaxton, Bridgwater, Somerset TA5 1DF

Tel: 01278 671960 e-mail: robert@pyeantiquesrestoration.co.uk www.pyeantiquesrestoration.co.uk





Fig 17, The new carved stretcher with the creating rail as a guide.

Robert Pye FIOC (Institute of Carpenters) BADA (West Dean) Diploma

Beech Tree Workshops, Tuxwell Farm, Spaxton, Bridgwater, Somerset TA5 1DF

Tel: 01278 671960 e-mail: robert@pyeantiquesrestoration.co.uk www.pyeantiquesrestoration.co.uk





Fig 18, Stretcher in place.



Fig 19, After bleaching with Nitric acid then neutralised with Acetic Acid and Oxalic acid.

Robert Pye FIOC (Institute of Carpenters) BADA (West Dean) Diploma

Beech Tree Workshops, Tuxwell Farm, Spaxton, Bridgwater, Somerset TA5 1DF

Tel: 01278 671960 e-mail: robert@pyeantiquesrestoration.co.uk www.pyeantiquesrestoration.co.uk





Fig 20, The Stretcher after colouring

Robert Pye FIOC (Institute of Carpenters) BADA (West Dean) Diploma

Beech Tree Workshops, Tuxwell Farm, Spaxton, Bridgwater, Somerset TA5 1DF

Tel: 01278 671960 e-mail: robert@pyeantiquesrestoration.co.uk www.pyeantiquesrestoration.co.uk





Fig 21 the chair before caning.



Fig 22 after caning

Robert Pye FIOC (Institute of Carpenters) BADA (West Dean) Diploma

Beech Tree Workshops, Tuxwell Farm, Spaxton, Bridgwater, Somerset TA5 1DF

Tel: 01278 671960 e-mail: robert@pyeantiquesrestoration.co.uk www.pyeantiquesrestoration.co.uk



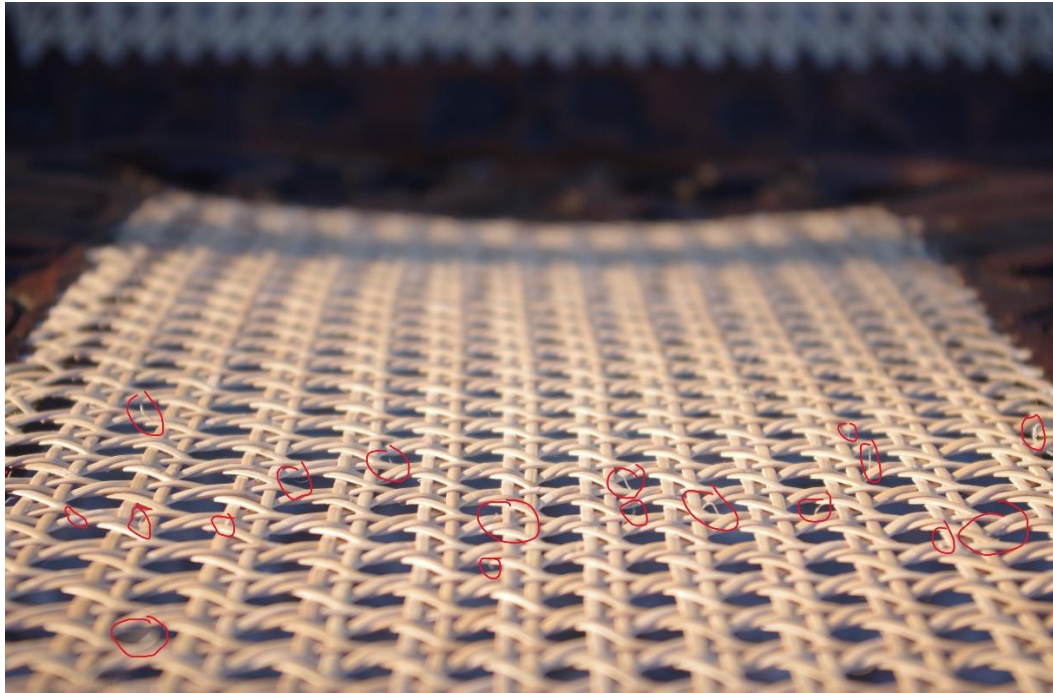


Fig 23 some of the loose ends

Fig 24, video of flame. I will email you both this link https://pyeantiquesrestoration.co.uk/wp-content/uploads/2025/09/20250923_111542.mp4

Advisory Caution:

The activities, techniques, and procedures demonstrated in these example videos are intended for informational and illustrative purposes only. They should not be attempted by untrained individuals. All such work must be carried out exclusively by qualified, licensed, and experienced professionals with the appropriate skills, tools, and safety measures. Attempting to replicate any of these examples without proper expertise may result in serious injury, damage, or regulatory non-compliance.

Robert Pye FIOC (Institute of Carpenters) BADA (West Dean) Diploma

Beech Tree Workshops, Tuxwell Farm, Spaxton, Bridgwater, Somerset TA5 1DF

Tel: 01278 671960 e-mail: robert@pyeantiquesrestoration.co.uk www.pyeantiquesrestoration.co.uk





Fig 25, Finished chair with caning stained after losing the new look and hairy loose ends one the cane by flame.

Robert Pye FIOC (Institute of Carpenters) BADA (West Dean) Diploma

Beech Tree Workshops, Tuxwell Farm, Spaxton, Bridgwater, Somerset TA5 1DF

Tel: 01278 671960 e-mail: robert@pyeantiquesrestoration.co.uk www.pyeantiquesrestoration.co.uk

